

Deck fittings



Belt for paddle holder behind cockpit 90283



Loop grip Touring with screws 10000012



Locking device with screws 90014



T-grip Touring with screws 10000013



Topcleat without screw 90000911 with screw and sealing 10000015



Belt fitting with rope control 90000688



Screws for deck fittings 4 x 14mm 10000001 (set of 10 pcs.)



Belt fitting basic 90000565



Rivet for deck fittings 4 x 14 90037 (set of 10 pcs.)



Deck net with fittings L-size 10000020 S-size 10000021



Hook for front line 90001175



Side fitting front line 90000646



Front line (length according following list)



Hook for deck netting small, new 90001756



Grip ball 90001681

List of front lines Prijon Touring

09.02.2018

	2,2 m	2,55 m	2,90 m
	90285	90286	90287
BARRACUDA			●
CALABRIA	●		
Capri I	●		
Capri II	●		
CATALINA			●
EXCURSION		●	
EXCURSION EVO	●		
Flipper	●		
KODIAK			●
LAGUNA	●		
MARLIN HTTP			●
MARLIN PriLite	●		
MILLENNIUM	●		
MOTION			●
PIAVE	●		
POSEIDON	●		
PROTEUS	●		
SEAYAK from 1997			●
Seayak 500 LV	●		
Seayak 520 HV	●		
TOURYAK		●	
TOURYAK 500			●
YUKON K 2 SPORT	●		

Foot control and rudder fittings



Holder for rudderblade complete with screws, nuts and washers
90040



Sealing
90096



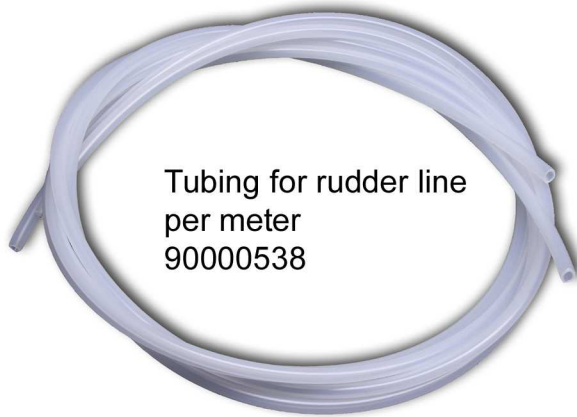
Rudder fitting stern, complete with screws, washers and rivets
10000010



Deckfitting rudder line
90001409



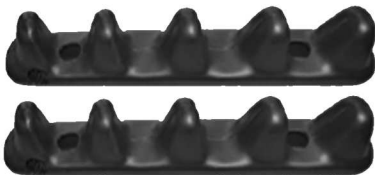
Deckfitting rudder line older version
90102



Tubing for rudder line per meter
90000538



Rudder fitting flat plastic complete with screws, washers and sealing
10000011
Version Aluminum for Excursion old
90039



Sawtooth footrest with screws and nuts
10000030



Holder for Tubing rudderline
90000978



Screw for deck fitting M4 (set of 10 pcs.)
10000001

Pedal set for foot control tour
90530

Rails for foot control pair inform about boat type
10000002

Screw for rails foot control
90000658

Complete set foot control touring with pedals and screws. 90045
Inform about boat type



Seat Touring



Seat Touring complete with backrest and padding
Inform about boat type
10000040



Tool M5
90001059

Backrest Touring without padding and belt
90133



Backrest CustomLine with padding and cushion complete
90002350

Seat Touring Basic with rails
Inform about boat type
90026

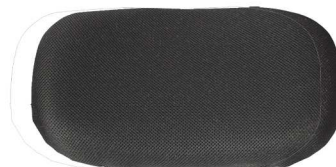


Screw for seat attachment complete with washers and sealings
10000086

Backrest Touring wocomplete with padding and belt
90136



Padding for back rest
10000041



Padding for seat
10000042



Plastic pin for seat padding
90001795

Foam bulkhead, hard covers neoprene covers and parts



Foam bulkhead touring boats
front 10000003, rear 10000004

Inform about type and year of manuvacure



Rubber-T for plastic cover new version
Inform about boat type and position
90120 (without fittings)



Belt fitting with rope control
90000688



Screw M 4 x 14 for deck fittings
(Set of 10 pcs.) 10000001



Hatch belt for plastic cover
Art.: 90105 **inform about type and position**



Neoprene hatches



Plastic hatches

On the following pages you find a list of plastic-and neoprene hatches for each boat type.
Here you can find out the article number for your order.

List of Neoprene Hatches

for storage compartments PRIJON touring boats

02.07.2020

	90002242	90002243	90002244	90002245	90002246	90002247	90002248	90002249		90122	90114	90155	90156	90110
	bow	stern	bow	bow	stern	bow	stern	stern		bow	stern	stern	bow	bow
Marking Size	1	2	3	4	5	6	7	8						
ALBOREA					•									
BARRACUDA HTTP						•						•		
BARRACUDA RS					•									
C 359												•		
CALABRIA											•			
CATALINA						•						•		
CL 430 Cruiser 430							•							
Dayliner S		•	•											
Dayliner L	•	•												
Dayliner "Light"				•	•									
Dayliner DUO		•	•											
ENDURO 380		•	•											
ENDURO 450		•				•								
EXCURSION										•	•			
EXCURSION EVO		•	•											
GRIZZLY	•	•												
KODIAK	•	•												
LAGUNA				•	•									
MARLIN HTP	•	•												
MARLIN PriLite and Laminate				•	•									
MILLENIUM					•								•	
MILLENIUM EVO				•	•									
MOTION	•											•		
MUNGA								•						
NARVA PriLite					•									
Odyssee								•						•
PIAVE vor 2016					•									
PIAVE 2016 stern				•										
POSEIDON		•	•											
PROTEUS				•	•									
Seayak from 1997	•	•												
Seayak until 1997 bow ans stern								•						
Seayak 500 LV, 520 HV and SkegYak HTP	•	•												
SkegYak PriLite, SENJA, ARUNA				•	•									
T-470 and T-505				•	•									
TOURYAK						•						•		
TOURYAK LV and TOURYAK 500	•	•												
YUKON E				•	•									
YUKON K 2 RELAX					•									
YUKON K 2 SPORT				•	•									
YUKON-EXPEDITION										•	•			

Rubber hatches for storage and DeckBox



DeckBox / Dayhatch
Hatch 90001777
FBase ring 90001778

**DeckBox complete set with
neoprene bag
pre mounted
90028**



Rubber hatch round
for CL 370,
Capri I Active and Seayak junior
90001789

Base ring for hatch round
90001790

Rubber sealing
90001933



Rubber hatch oval
for CL 470 and CL 490
90001920

Base ring for hatch oval
90001921

Neoprene bag for Deckbox
curved version 90001512

Screws for deckfittings
10000001 (set of 10 pcs.)



Cockpit and thigh braces



There are several different versions out on the market.

So please provide boat type, year of manufacturing or serial number with your order.



Cockpit ring 10000005
Please provide type of boat
only a view available.

Alternative from 2015:
Cockpit profile
per meter
90001928

please provide length



Rivet for cockpit
90001168



Outer part for rivet
90000684



3-D thigh brace touring
complete set 90205T



3-D thigh brace whitewater
complete set 90205W



3-D screw set
10000085



2-D thigh braces Touring
Dayliner, CL, Capri und Excursion EVO
new 2018. complete set 90212



Thigh brace Active, CL and Dayliner
until 2017. 2018 only for Seayak and
Kodiak Active. complete set 90173



Thigh braces for older models
please provide type or serial number



Thigh brace foam for PriLite
and laminated boats
90001520



Screw M8
10000007
inform about the length



Rectangular nut M8
90001178



Sliding nut M8
90000363